

WAHL CLIPPER CORPORATION
World Headquarters
P.O. Box 578, Sterling, IL 61081

Wahl (UK) Limited
Sterling House, Clipper Close
Ramsgate, Kent CT12 5GG
United Kingdom

Wahl Australia Pty Ltd.
PO Box 456
Acacia Ridge QLD 4110
Australia


Wahl NZ Ltd.
P.O. BOX 38 323
Wellington Mail Centre
Lower Hutt 5045
New Zealand

Wahl India Grooming Products
Pvt. Ltd.
B-1002, 10TH Floor, B-Wing, Lotus
Corporate Park,
Off Jay Coach Flyover, Western
Express Highway,
Goregaon-East, Mumbai-400 063.
India

Wahl Clipper (PTY) Ltd.
PO Box 2916 Bedfordview
Gauteng 2007
South Africa

Wahl International Consumer Group
Engelenburgstraat 36
7391 AM Twello,
Nederland

WAHL MEA FZCO
Office # 123, Building # 6E- A
PO Box. 371395
Dubai Airport Free Zone, Dubai
United Arab Emirates

WAHL Russia
(ООО «Уолл Рус») 
Российская Федерация
129164, Москва,
Ракетный бульвар, 16
info@wahlrus.ru

Wahl Argentina
Av. Alvarez Jonte 5655
Buenos Aires (C1407GPK)
Argentina

Wahl Clipper Brasil
Rodovia Geraldo Scavone, 2300
UC 45. Pedregulho.
Jacarei - SP. CEP: 12305-490

Wahl GmbH
Foggenbachweg 9
78089 Unterkirnach,
Germany

WAHL Spain
Fernando Giner de los Rios 12
46910 Sedavi
Valencia, Spain

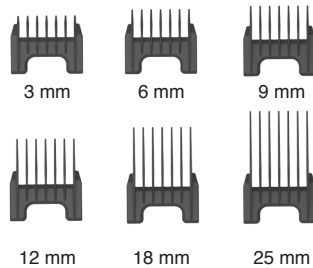
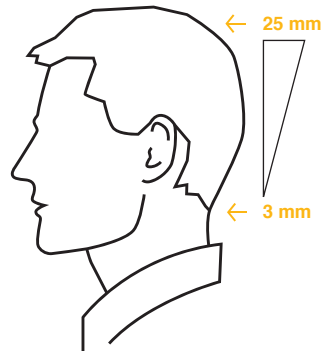
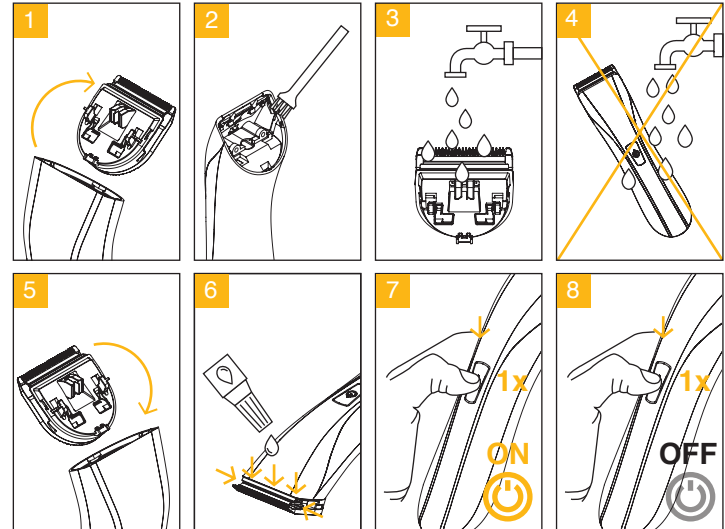
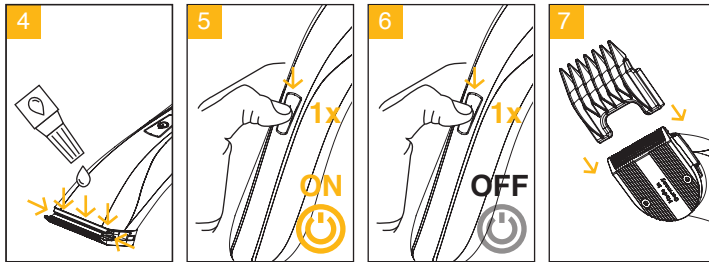
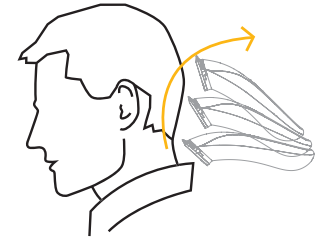
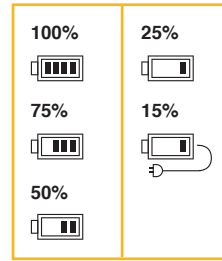
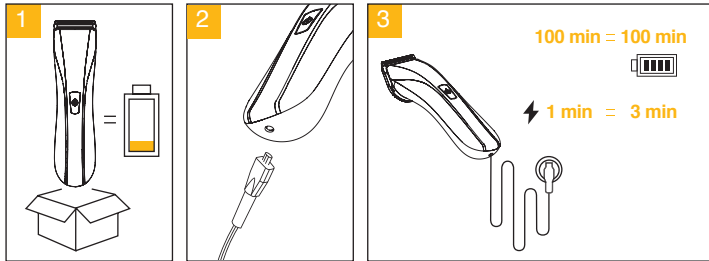
© 2019 Printed in Hungary
Wahl® is a registered trademark
of Wahl Clipper Corporation
www.wahl-consumer.com

1911 WAHL Lithium Pro Clipper

MODEL/TYPE 1911



Part No.1911.1017



1911 WAHL Lithium Pro Clipper

1911 WAHL Lithium Pro Clipper

